

accelalpha



**DOES YOUR ORACLE
SYSTEM NEED A
HEALTH CHECK?**



For organizations still relying on legacy and on-premises versions of Oracle applications, Accelalpha offers the unique ability to perform a health check to assess how these Oracle applications are meeting the needs of the organization. A health check is a great way for an organization to evaluate its cloud readiness or to determine whether it is getting the full benefit from all the features and capabilities of its Oracle applications.

The best way to determine whether a health check could benefit your organization is to talk with an Accelalpha consultant. It is always a good time to take stock of how applications are being utilized, but it is becoming increasingly vital to carry out a health check as organizations plan for cloud migration.

Table of Contents

Cloud Migration	4
Factors Holding Up Cloud Migration	4
Common On-Premises Inefficiencies	5
Proactively Strive for Health	6
What is the Purpose of a Health Check?	6
Common Reasons Organizations Need a Health Check	7
How is the System Functioning?	7
A Different Kind of Setup	8
See Nothing – Do Nothing	9
Assessing Cloud Readiness	10
Unlock Your Organization’s Potential	11
About Accelalpha	13

[SCHEDULE A CALL WITH AN EXPERT CONSULTANT TODAY >](#)

Cloud Migration

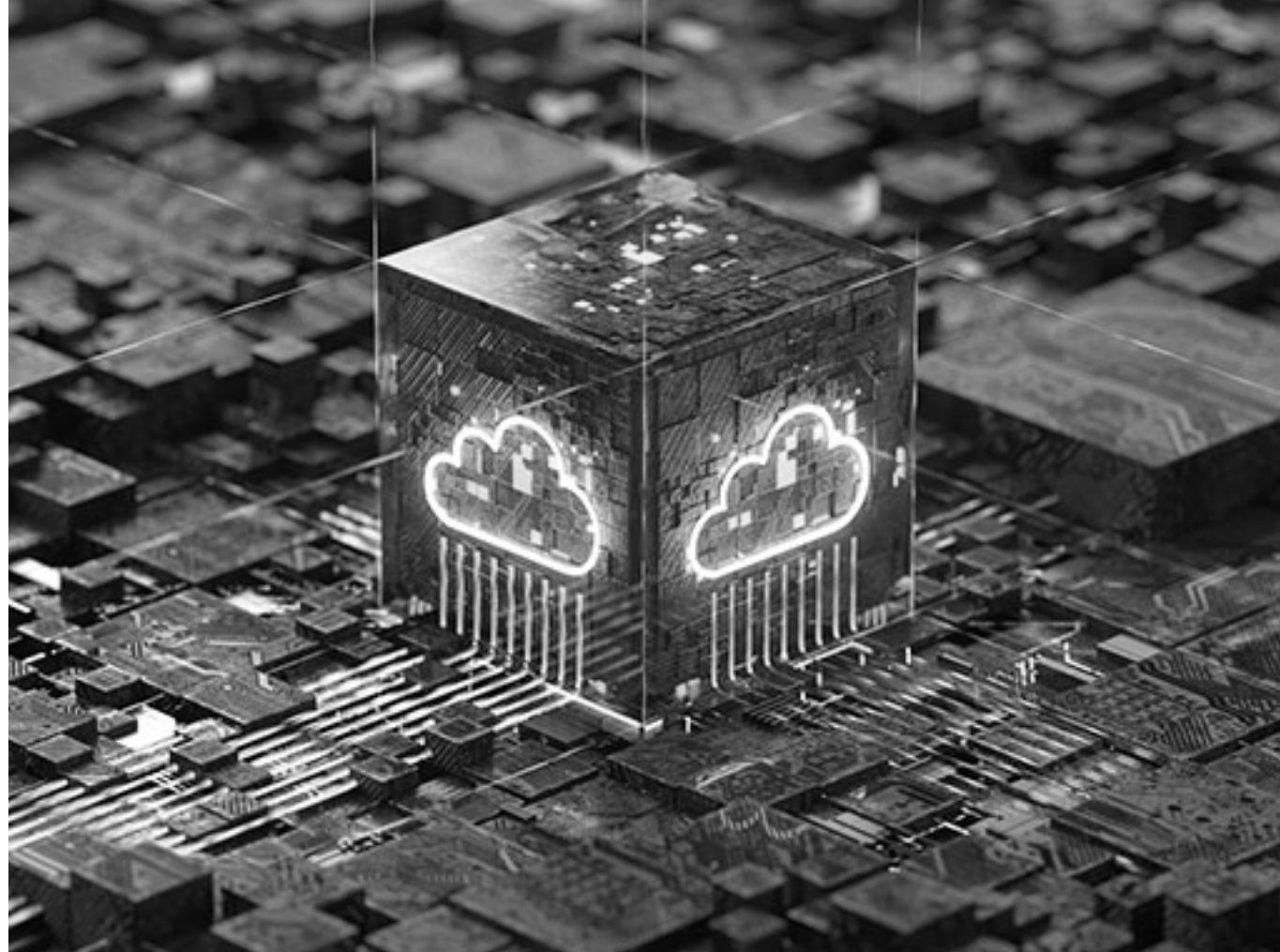
A February 2022 [Press Release](#) by Gartner quotes its research vice president, Michael Warrilow, who said, “The shift to the cloud has only accelerated over the past two years due to COVID-19, as organizations responded to a new business and social dynamic”.

While everyone is talking about the inevitability of cloud migration, some are left wondering how to begin planning for this move while maintaining existing on-premises systems. Many organizations remain reliant upon an outdated legacy system, with some not even in the planning stage for cloud migration. You might be wondering, ‘Why are so many still clinging to old Oracle systems if the cloud is so much better?’.

This eBook will explore the realities and challenges organizations that still use on-premises systems are facing, what organizations can do to ensure they get the most out of their on-premises systems and discuss where and how the cloud fits.

Factors Holding Up Cloud Migration

The following are some common reasons currently holding many companies back from transitioning to the cloud:



- **Budget:** The organization would like to move to the cloud, but they don’t have the budget yet and need their current system to continue operating for the time being.

- **Too many customizations:** The organization has too many customizations on an existing system and isn’t ready for the time and financial investment necessary to migrate its customized functionality to the cloud.

- **Familiarity:** Regardless of actual functionality, many consider their legacy systems to be reliable or, at least familiar to existing users.

- **Data centers:** The organization made a sizeable investment in its data center and wants to get the most out of it.

Common On-Premises Inefficiencies

An expensive, on-premises data center must have an IT department to monitor and manage it and to ensure that security is maintained.

Organizations experiencing dissatisfaction or performance-related issues should consider re-assessing the software for areas of weakness.

Below are some of the most common reasons that on-premises systems are inefficient:

- On-premises Oracle applications don't have the latest features designed to improve efficiency.
- The organization must manage all software updates.
- On-Premises systems usually involve an expensive data center with expensive servers located in a building maintained by a dedicated staff of IT experts.
- On-premises setups are a considerable investment upfront and are expensive to maintain.



Proactively Strive for Health

What is the Purpose of a Health Check?

Accelalpha's Solution Health Check and Monitoring services were created to act as preventative healthcare for your Oracle system. A Health Check allows Accelalpha consultants to identify areas that need improvement and provide recommendations that help you to get the most out of the features available in your Oracle applications.

If your organization is still using an on-premises Oracle system and you plan to keep using it for the time being, answer the following questions to determine if you could benefit from having Accelalpha conduct a Health Check:

- 1.** Is your system experiencing performance-related issues or failing to improve existing operations?
- 2.** Are you able to take advantage of the solution benefits and functionalities you were anticipating?
- 3.** Is the system helping you to actively improve key organizational processes?



Common Reasons Organizations Need a Health Check

Many organizations seek a Health Check following staff turnover in IT or in the business. Subsequently, the organization becomes uncertain of what the Oracle solution can deliver.

After running an Oracle application for an extended period, an organization must look critically at its system and operations to understand what is working and what is no longer meeting the organization's needs.

How is the system functioning?

Typically, the Health Checks that Accelalpha performs are on Oracle systems or solutions that Accelalpha did not initially implement. Many organizations come to Accelalpha saying, "OK. We have an Oracle system. Now we need to know if it is delivering the benefits we need."

The need for a Health Check most often arises when an organization realizes they don't know what the system does because there isn't documentation available detailing the solution design, process flows, functions, or customizations that have been made to the system.



When an on-premises customer comes to Accelalpha with performance-related issues, we aim to assess the software and uncover how the system was configured to pinpoint where the problem originates.

After documenting the organization's software, the Accelalpha consultant reports back and provides a detailed report of what the system currently does, detailing best practices for their existing Oracle solution, including a list of needed updates or fixes.

This can often result in the organization questioning why they should migrate to the cloud or change how they are using their solutions. However, this kind of server or hardware hosting often locks the organization into a restrictive long-term contract.

A different kind of setup

Some organizations don't have to face the challenge of housing complex on-premises systems with expensive servers. In the early 2000s, many organizations relied on hosting facilities, eliminating the need for an on-site server room with bulky hardware. These hosting companies do all of the hardware maintenance.

These hosting services were popular because even if your organization didn't have the IT resources, you still had options because the hosting company would step in and take care of the hardware for you. This can often result in the organization questioning why they should migrate to the cloud or change how they are using their solutions. However, this kind of server or hardware hosting often locks the organization into a restrictive long-term contract.

Another common situation is one in which two or more companies are hosting the organization's servers for them. While this may be more cost-effective for the organization, if something ends up breaking or not running efficiently, the organization is forced to bounce around between the hosting companies to find out where the issue is coming from and ensure it gets resolved.



See Nothing – Do Nothing

A Health Check may even reveal that something is no longer working or uncover an area where improvements need to be made. However, that is often what turns many organizations off from having one performed. As a result, the impetus for a Health Check usually occurs when new management comes in and wants to assess what the system does, how well it is performing, or in instances where the organization is taking a step toward growth.

This hesitancy often arises because members of the organization who have had a hand in developing the system in question aren't willing to abandon the system they played a role in designing and can make those who worked hard on its initial development more determined to keep the existing system. Because of this, it can be challenging to convince organizations that a process, an IT system, or even a specific customization is no longer functioning as desired and may perhaps be restricting their growth.

In other cases, a Health Check can reveal that some on-premises systems are well-developed, serving a purpose, and still adding value. In that case, the Accelalpha consultant would report on what is working well and whether replacing it with another application would add to that value. These instances tend to be rare, and Health Checks usually reveal that the system is no longer meeting the needs of the organization.



Assessing Cloud Readiness

Another primary reason that motivates organizations to perform a Health Check is to assess their cloud readiness before moving forward with a cloud migration. Oftentimes, the outcome of a Health Check reveals that the organization's most advantageous and economical option is to migrate to the cloud, even if that was not originally the intended outcome of the Health Check.

For example, one of Accelalpha's customers who reached out to us for a Health Check realized that their best option for the future was to move to the cloud instead of implementing temporary patches onto their existing on-premises system. This particular organization had been using an on-premises OTM solution for the past 14 years to handle over a billion dollars in transportation spending, dealing with a weekly average of 25,000+ shipments.

There was no documentation recording what their system was doing, and even though the size of the operation was large, they continued using their legacy system even though they didn't fully understand its function.

An Accelalpha consultant assessed the organization's high-risk areas and provided



a high-level project plan showing how much time and cost would be required to migrate to the cloud. As a result, the customer could see that migrating to the cloud would be a much more cost-effective option for their organization in the long run due to subscription-based or pay-as-you-go options. The organization decided to switch to the cloud immediately because the

Oracle Cloud comes with the capabilities to help mitigate performance-related issues, as well as having all software maintenance managed by Oracle, including automatically applying quarterly software upgrades to the organization's applications.

Unlock Your Organization's Potential

If you're ready to have your current system usage and Oracle application performance, or you are interested in finding out more about Health Checks, reach out to an [Accelalpha consultant](#).

Our consultants will deliver a detailed report that reveals just how much your Oracle applications are supporting your business processes, as well as areas that need improvement. You deserve to know whether or not you are taking full advantage of your Oracle solution features. Find out if your system is equipped to handle critical business needs and operations as your organization grows.



Contact Us



JOE SPEAR

Partner | Global Consulting Services

Phone: +1 (206) 459-9851

Email: joe.a.spear@accelalpha.com



JULIAN TROAKE

Vice President | Marketing

Phone: +1 (617) 648 6367

Email: julian.troake@accelalpha.com





About Accelalpha

Accelalpha is a long-time strategic partner of Oracle. We provide IT services to implement and manage Oracle Cloud applications. We work collaboratively with our clients to develop solutions tailored to their unique needs. Our rigorous focus on the business outcome allows us to deliver tangible results quickly for a rapid return on investment.



[LEARN MORE ABOUT ACCELALPHA >](#)