



# Aptean's Food and Beverage Solution Suite

Purpose-Built Solutions Powered by Microsoft  
Business Central From a Premier Provider





**“Aptean Food & Beverage ERP was the best solution we saw, and that’s very evident now that we’re using it on a daily basis.”**

**-Jerry Dugan, Controller, Pizza Joe’s**

## Thriving in Volatile Markets and Unpredictable Times

Aptean’s food and beverage solutions address key pain points in the industry by enhancing efficiency, supply chain resilience and data-driven decision-making. Our software suite helps businesses digitize and automate processes, mitigating human error and manual record-keeping, while also ensuring compliance with regulatory standards.

Through real-time asset monitoring and predictive analytics, our solutions optimize performance and production speed, reducing downtime and waste. The solution suite also streamlines the supply chain, offering better forecasting and vendor management while minimizing inventory issues. These features allow food and beverage companies to stay agile in dynamic markets.

» Businesses using industry-specific solutions experience **10.1% annual revenue growth.**

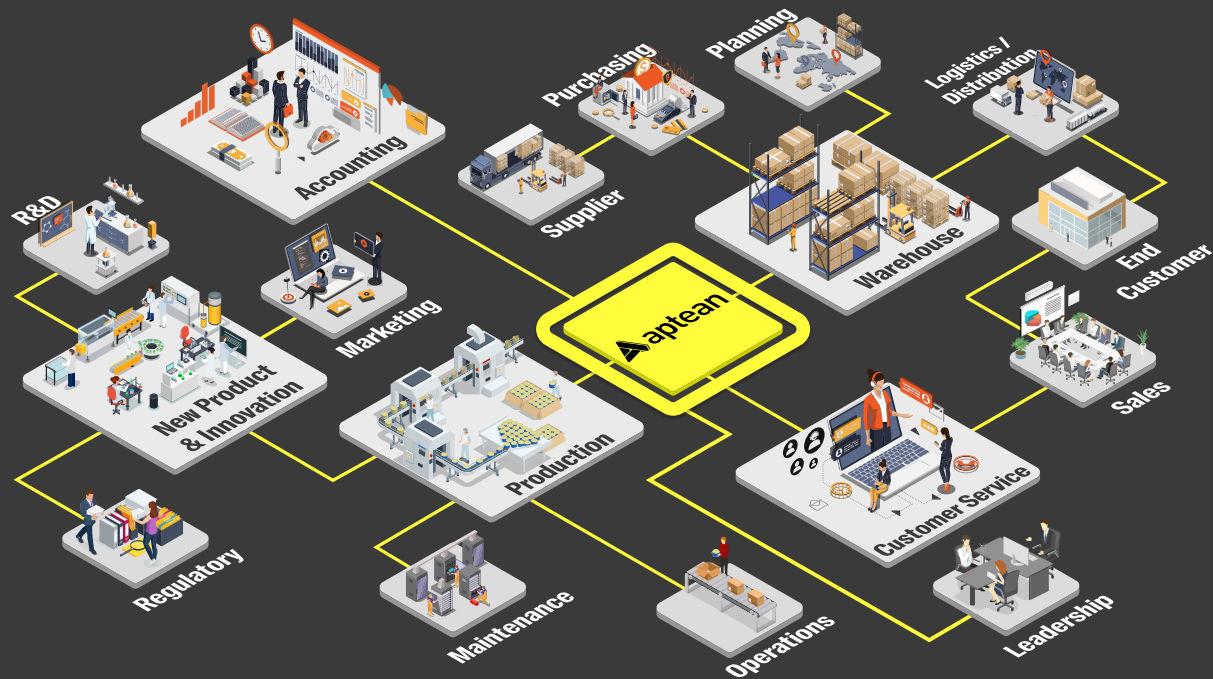


**Purpose-Built by  
Specialized Food  
and Beverage  
Experts**

**Future-Proof  
Software Powered  
by the Microsoft  
Cloud**

**Streamlined,  
Integrated  
Operations  
End-to End**

**A Single  
Experienced  
Vendor as Your  
Partner**



# Apteian Food & Beverage ERP

Apteian Food & Beverage ERP is ideal for companies seeking to address the complex and specialized requirements of a food and beverage business—from planning and procurement to production and quality. Our comprehensive ERP solution is uniquely tailored to meet the specific demands of the food and beverage industry, effectively managing every aspect of your business seamlessly and in an integrated way.

What's more, our solution offers unique technology built on the Microsoft Dynamics 365 online platform, ensuring reliability and scalability. Also, the software is hosted on the world's most secure cloud, so you can expect dependable operational continuity.

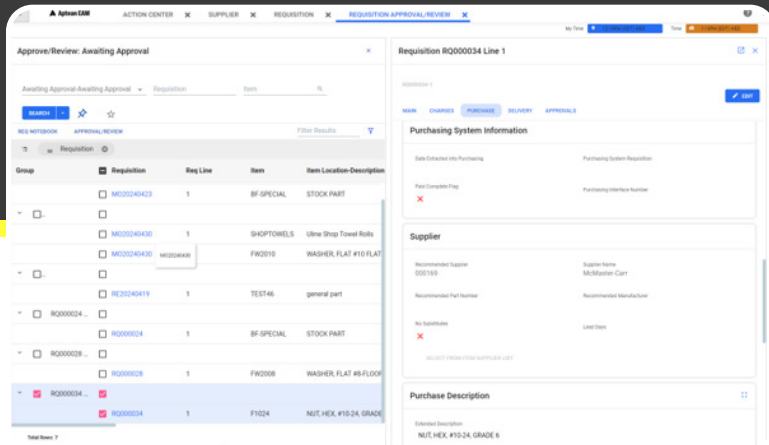
» The top driver for ERP purchase is **securing industry-specific functionality.**

## Key Capabilities

- » Maintain Full End-to-End Traceability
- » Enable Mobile Warehouse Management
- » Utilize Catch Weight Capabilities
- » Implement Flexible Trade Agreements
- » Leverage Production Planning and Scheduling
- » Manage Customer Non-Conformances
- » Enhance Quality Control
- » Improve Distribution Management



# Enterprise Asset Management



Aptean EAM seamlessly integrates with your other business applications, creating a unified experience that optimizes maintenance processes and asset performance. By providing real-time visibility into asset conditions, the solution enables proactive maintenance, preventing unexpected equipment failures and downtime.

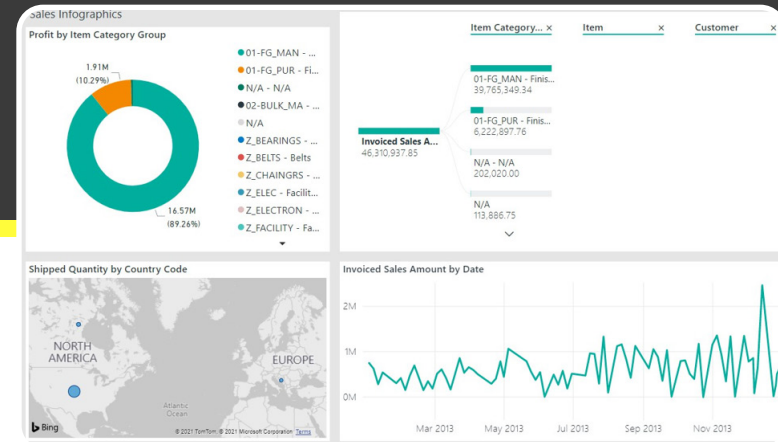
Our solution also streamlines the management of maintenance, repair and operating (MRO) inventory, ensuring optimal stock levels and minimizing operational disruptions. With our EAM solution, you can improve efficiency, reduce costs and enhance productivity.

## Features and Functionalities

- » **Maintenance Scheduling:** Automate and optimize maintenance procedures.
- » **Asset Performance Monitoring:** Track performance in real time and prevent downtime.
- » **Inventory Control:** Efficiently manage spare parts and Inventory.

» Businesses using industry-specific EAM grow revenue by 10.7% annually.

# Business Intelligence



Aptean BI consolidates and analyzes data from across your organization, integrating seamlessly with other applications to provide comprehensive, real-time insights. With pre-built analytics and customizable dashboards, you can make data-driven decisions that optimize processes and enhance profitability.

Our BI solution offers transparency into production performance, resource allocation and overall operational health, enabling better strategic planning and informed decision-making for long-term success.

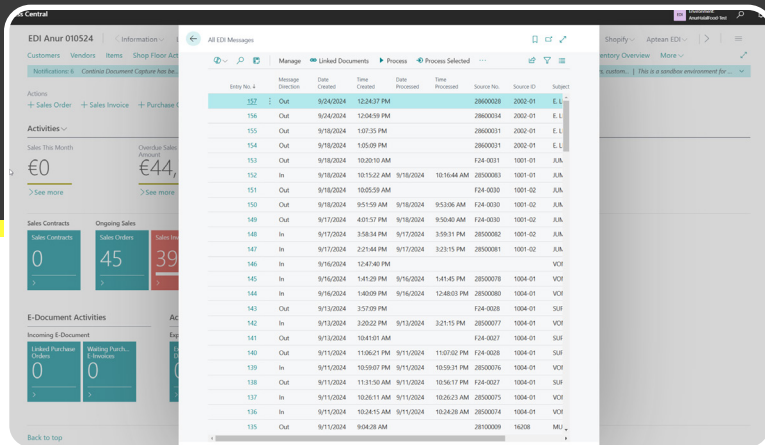
## Features and Functionalities

- » **500+ KPIs Tracked:** Track essential metrics, with more than 300 specific to the food and beverage industry.
- » **Pre-Built Dashboards:** Access dashboards tailored for food and beverage manufacturing needs.
- » **Customizable Analytics:** Create reports for specific business goals.

» Businesses using industry-specific BI grow revenue by 11.3% annually.



# Electronic Data Interchange



Aptean EDI automates the exchange of critical documents between your food and beverage business and your trading partners, eliminating manual processes and ensuring accurate, real-time data transfer.

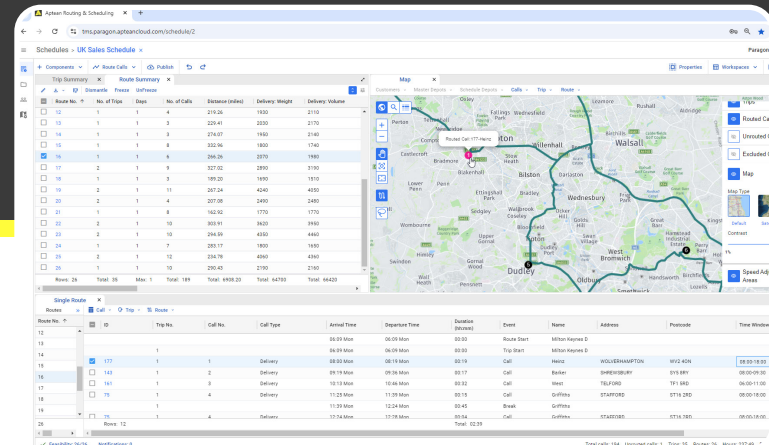
Our solution improves collaboration, speeds up transactions and reduces supply chain bottlenecks. This solution allows your company to streamline order processing, invoicing and fulfillment, ensuring seamless, reliable operations that align with industry demands.

## Features and Functionalities

- » **Automated Document Exchange:** Seamlessly exchange orders, invoices and key documents.
- » **Real-Time Data Synchronization:** Ensure up-to-date information is shared across all partners.
- » **Compliance Management:** Meet regulatory and trading partner standards.

» Acquiring new customers is the **No. 1 short-term focus area.**

# Transportation Management



Aptean's transportation management solutions automate and optimize automates and optimizes route planning, saving your staff time and minimizing costs for fuel and vehicle repairs. With real-time visibility across your distribution operations, you can minimize failed deliveries, reduce shipping errors, improve on-time deliveries and enhance customer experience.

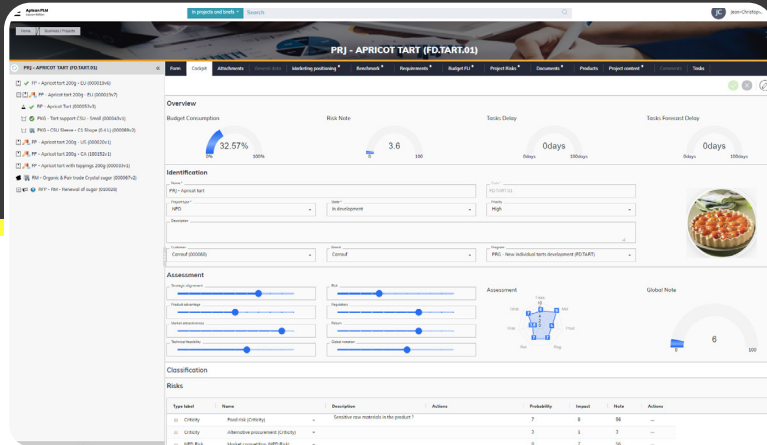
Whether you own your private fleet, rely on carrier connections or both, we can support you in achieving the best transportation services possible.

## Features and Functionalities

- » **Automated Route Planning:** Automatically create routes for minimal mileage, reduced fuel consumption and optimized resource utilization.
- » **Multi-modal, Multi-carrier Management:** Shop for the best carrier rates to protect your margins.
- » **Live Execution Tracking:** Monitor vehicles and delivery performance.

» Managing transportation costs is a **key focus area for 52% of businesses.**

# Product Lifecycle Management



Aptean PLM *Lascom Edition* allows businesses to seamlessly manage the many interconnected elements of new product development to design appealing offerings and accelerate time to market. Our solution centralizes and integrates data, workflows, teams and systems across your business in order to provide a single source of truth.

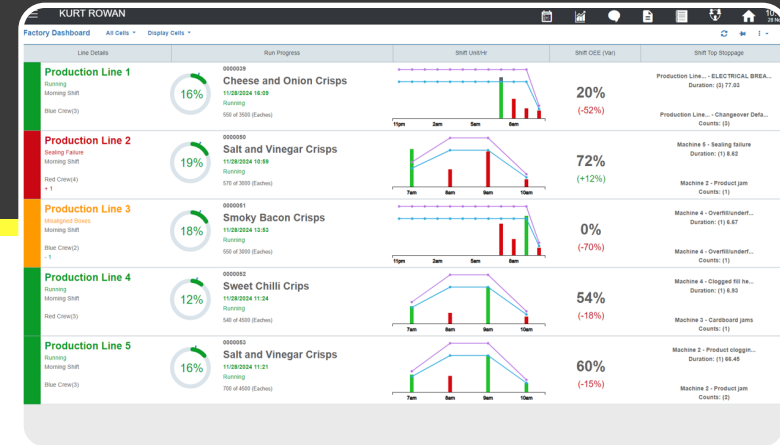
Facilitate innovation, reduce costs and accelerate growth. Our solution is designed specifically for the food and beverage industry, with features for formulation, compliance, packaging and more.

## Features and Functionalities

- » **Formulation Tool:** Streamline recipe development and optimize specs and costs effortlessly with AI.
- » **Label Management:** Auto-generate Nutrition Fact Panels, Ingredient Statements and verify claims with ease.
- » **Portfolio Management:** Improve agility and responsiveness to new consumer demands or trends.

» 55% of businesses see technology as vital for expanding into new markets.

# Overall Equipment Effectiveness



Aptean OEE provides complete visibility into manufacturing operations and gives businesses the ability to see performance data in real time and empower teams to act upon it immediately.

Our solution helps optimize production and collaboration across the entire business. With full visibility from batching through to packaging, you can leverage up-to-date metrics for plan attainment and units per man hour to help you build a culture of continuous improvement.

## Features and Functionalities

- » **Real-Time Performance Metrics:** Measure plan attainment and OEE as production occurs.
- » **Continuous Improvement:** Track and improve changeover, clean in progress (CIP) and sanitation times.
- » **Loss and Waste Monitoring:** Pinpoint manufacturing issues causing loss for rectification.

» Digital transformation produces the largest KPI improvements in OEE.



## Extended Capabilities

Aptean Pay – Online Payments



Aptean WMS - Warehouse Management



Aptean ePOD - Electronic Proof of Delivery



Aptean Ship - Shipping



Aptean Advanced Workflow - Process Automation



## Explore the Sub-Industries We Serve:

Fresh Produce

Meat, Poultry  
and Seafood

Beverage

Bakery

Dairy

Confectionery

# Why Aptean

Aptean's cloud-native Food and Beverage ERP system is built on Microsoft Dynamics 365 platform and comes with built-in AI capabilities.



## 290

New Features &  
Functionalities Added in  
the Last 3 Years

## 30+

Years of Development in  
the Industry

## 1.5K+

Global Food & Beverage  
Customers

## 30K

Global Food & Beverage  
Users

**DeLORIO'S**

**GA**foods

**Gehl's**

**GREGGS**

**LITEHOUSE**

**MONIN**

Explore Aptean Success Stories >>





# Take the Next Step Today

Mission-Critical Enterprise Software, Tailored to Your Industry's Needs and Powered by Microsoft AI

Request Pricing >>

Request Your Demo >>



Aptean is a global provider of industry-specific software that helps manufacturers and distributors effectively run and grow their businesses. Aptean's solutions and services help businesses of all sizes to be Ready for What's Next, Now®. Aptean is headquartered in Alpharetta, Georgia and has offices in North America, Europe and Asia-Pacific.

To learn more about Aptean and the markets we serve, visit [www.aptean.com](https://www.aptean.com).

*Aptean and Ready for What's Next, Now are Registered Trademarks of Aptean, Inc. All other company and product names may be trademarks of the respective companies with which they are associated.*

Copyright © Aptean 2024. All rights reserved.

All statistics in this asset are from an original research survey conducted by Aptean and B2B International in Q3 2024.

